

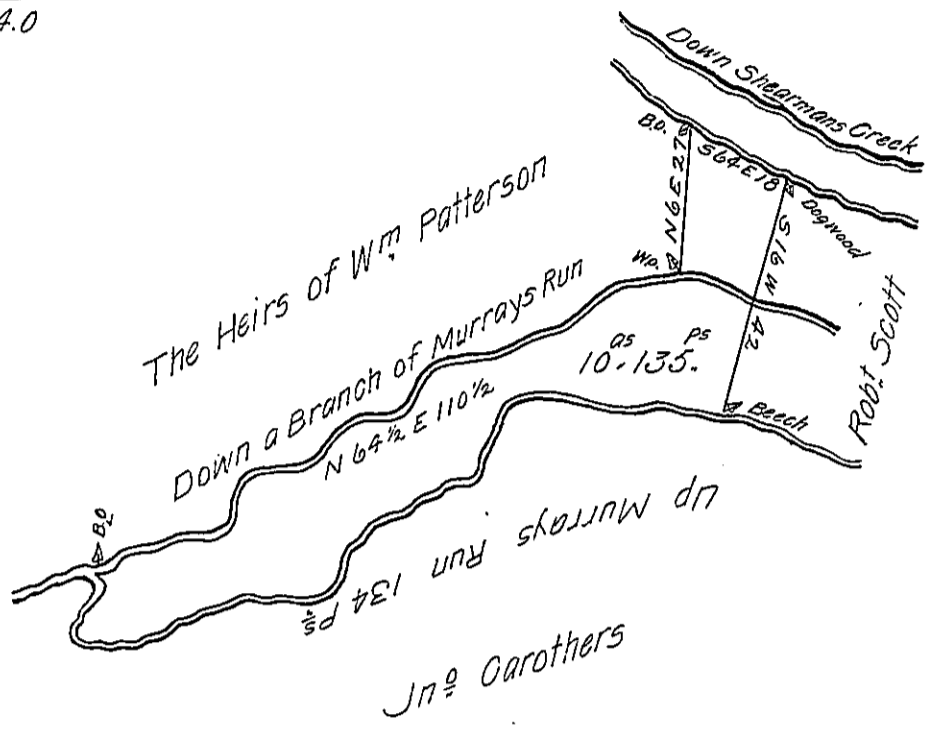
FORM No. 1.

Courses & Distances up Murrays Run
 from the Beech to the B.O.

N 78 W 14
 S 87 W 26
 S 42 W 22
 S 65 W 50
 N 87 W 11½
 N 21 E 10½ to B.O.
 134.0

Course and Distance Down a
 Branch of Murrays Run from
 the B.O. to the W.O.

N. 64½ E 110½ to W.O.



The Draught of a tract of Land Situate in Tyrone Township Cumberland County contain-
 ing Ten acres & one hundred & thirty five perches & allowance &c. Surveyed the 21st &
 22nd August 1804. on a warrant of 10^{as} granted to Capt William Power Dated August
 14th 1804.

Wm Ramsey

D.S.

To Saml Cochran Esquire }
 Surveyor Genl of Pennsyla }

IN TESTIMONY that the above is a copy of the original remaining on file in
 the Department of Internal Affairs of Pennsylvania, made
 conformably to an Act of Assembly approved the 16th day of
 February, 1833, I have hereunto set my Hand and caused
 the Seal of said Department to be affixed at Harrisburg,
 this twentyeighth day of May 1906.

Isaac D. Brown
 Secretary of Internal Affairs.